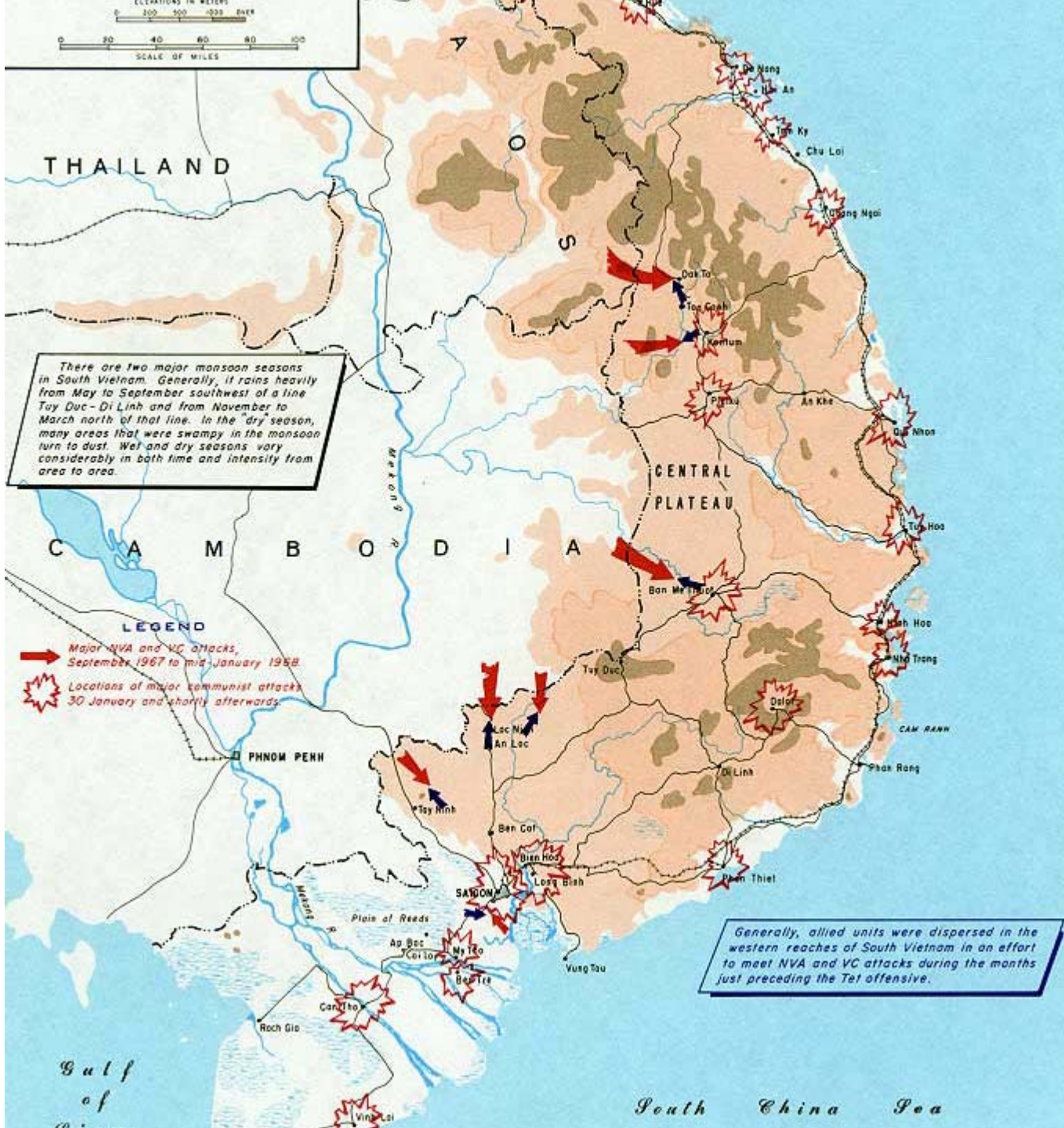


# The Tet Offensive: Graphs, Maps, and Quotes

Edwin Moise

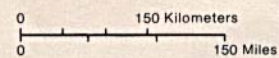






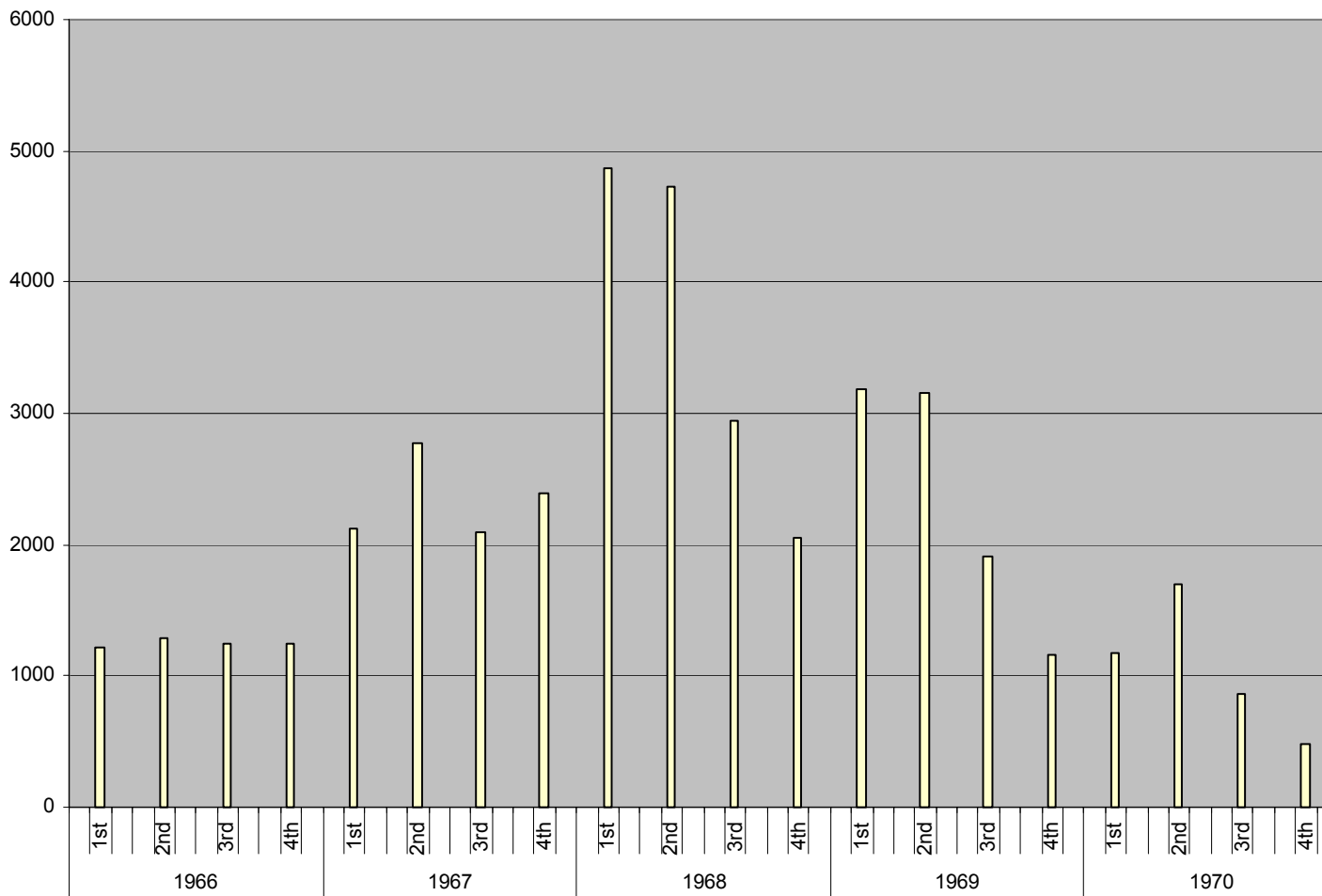
### Indochina

- International boundary
- ★ National capital
- +— Railroad
- Road

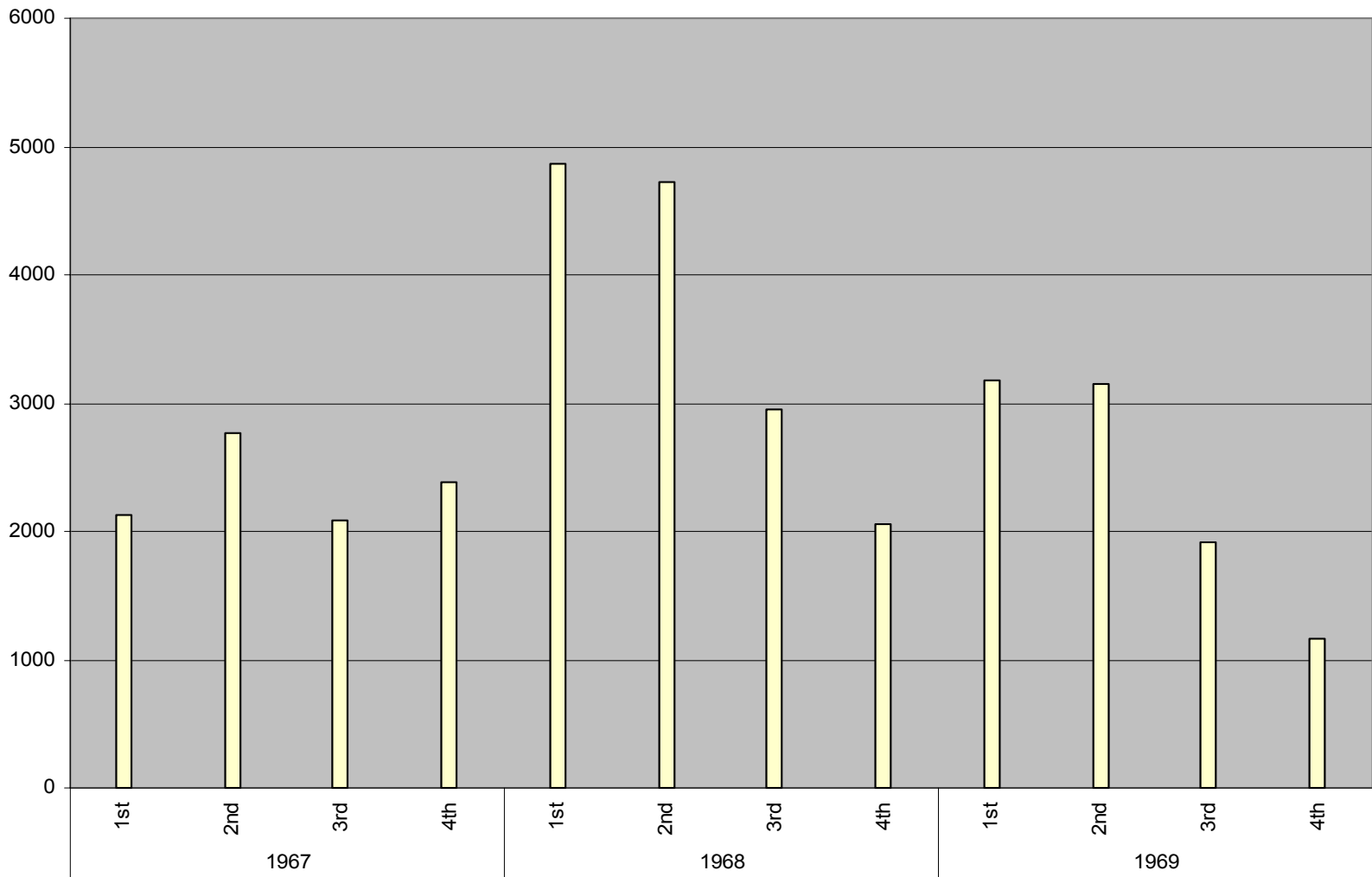


Boundary representation is not necessarily authoritative. Names

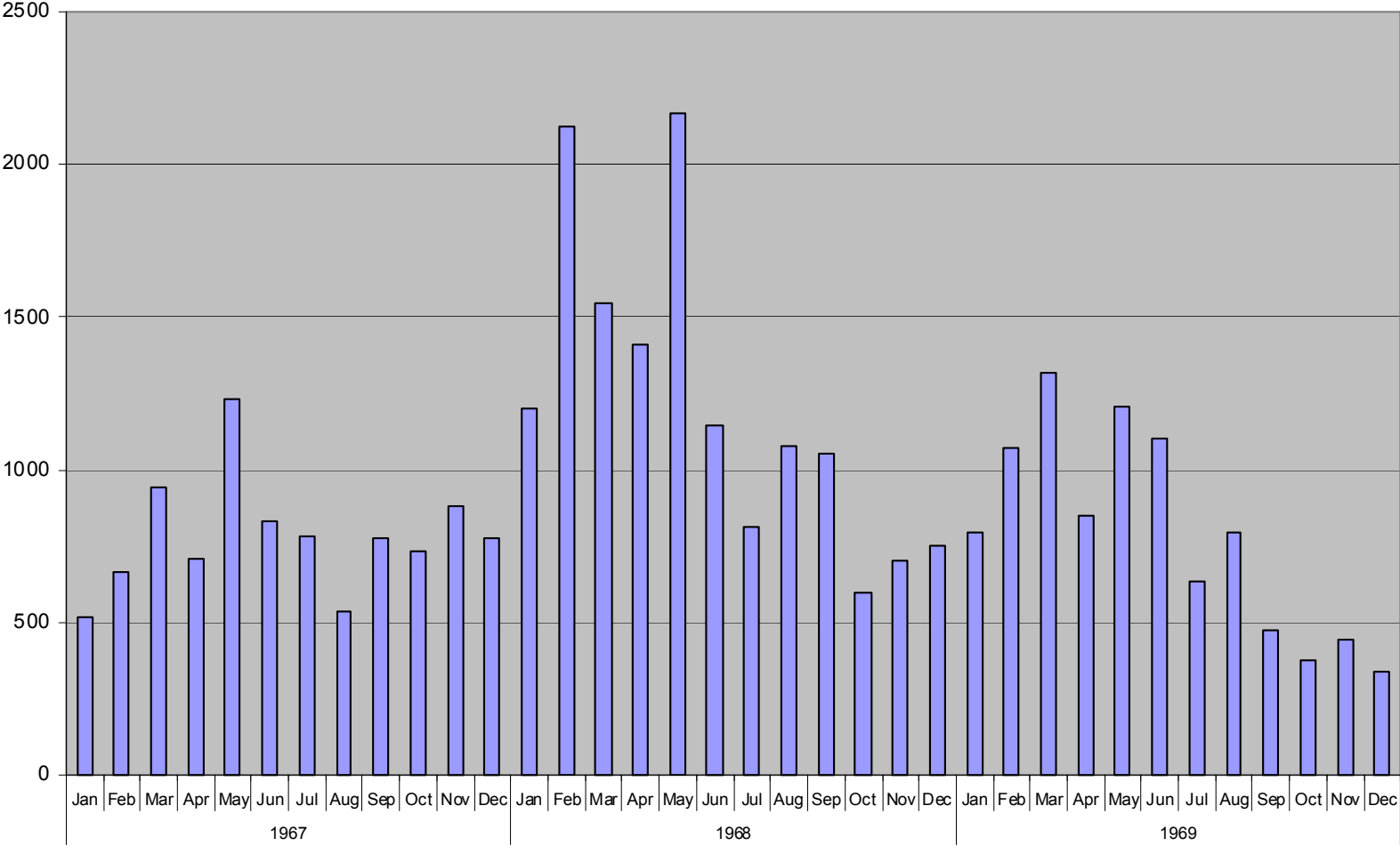
### Americans Killed by Hostile Action - Quarters



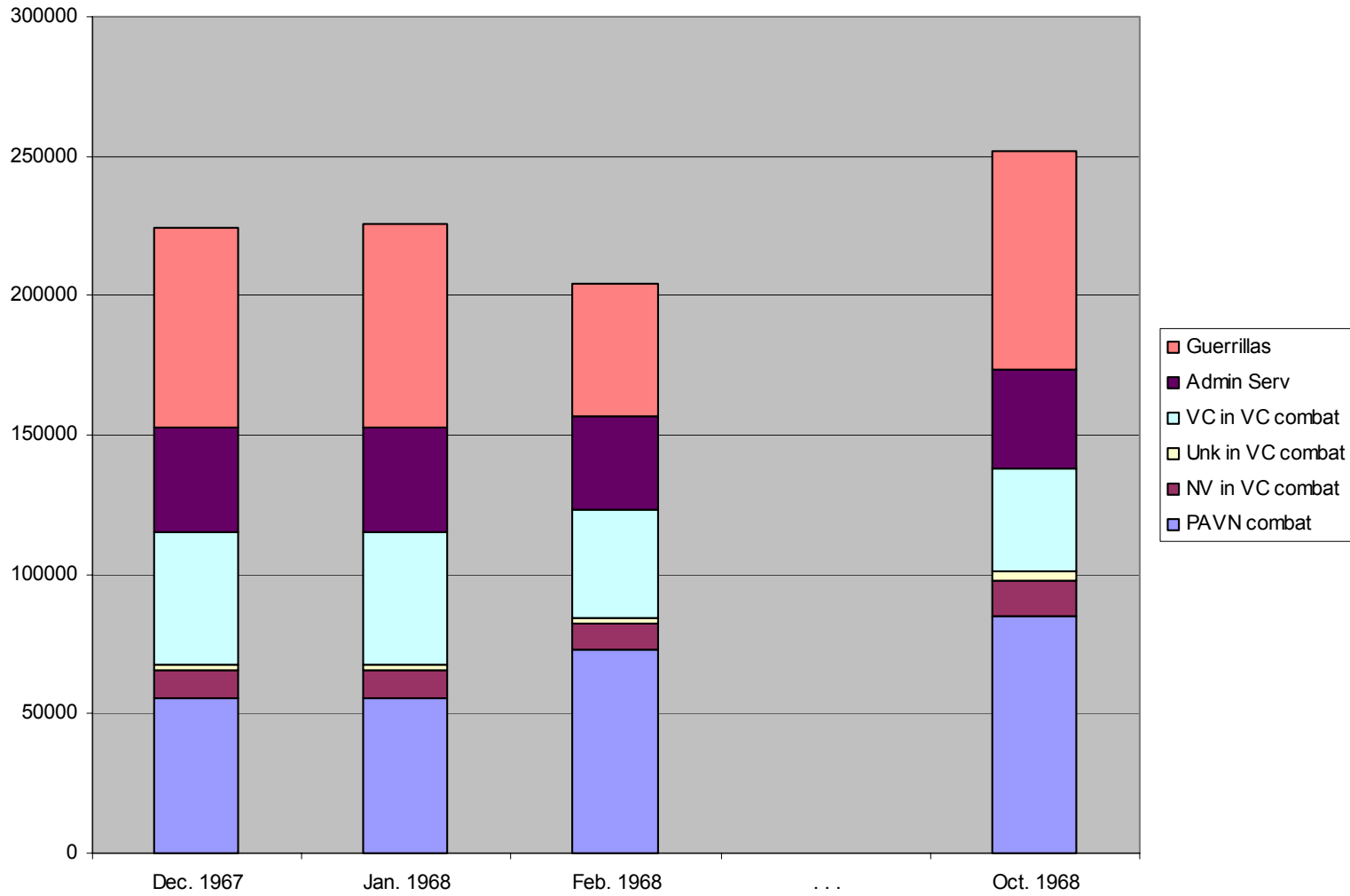
### Americans Killed by Hostile Action - Quarters



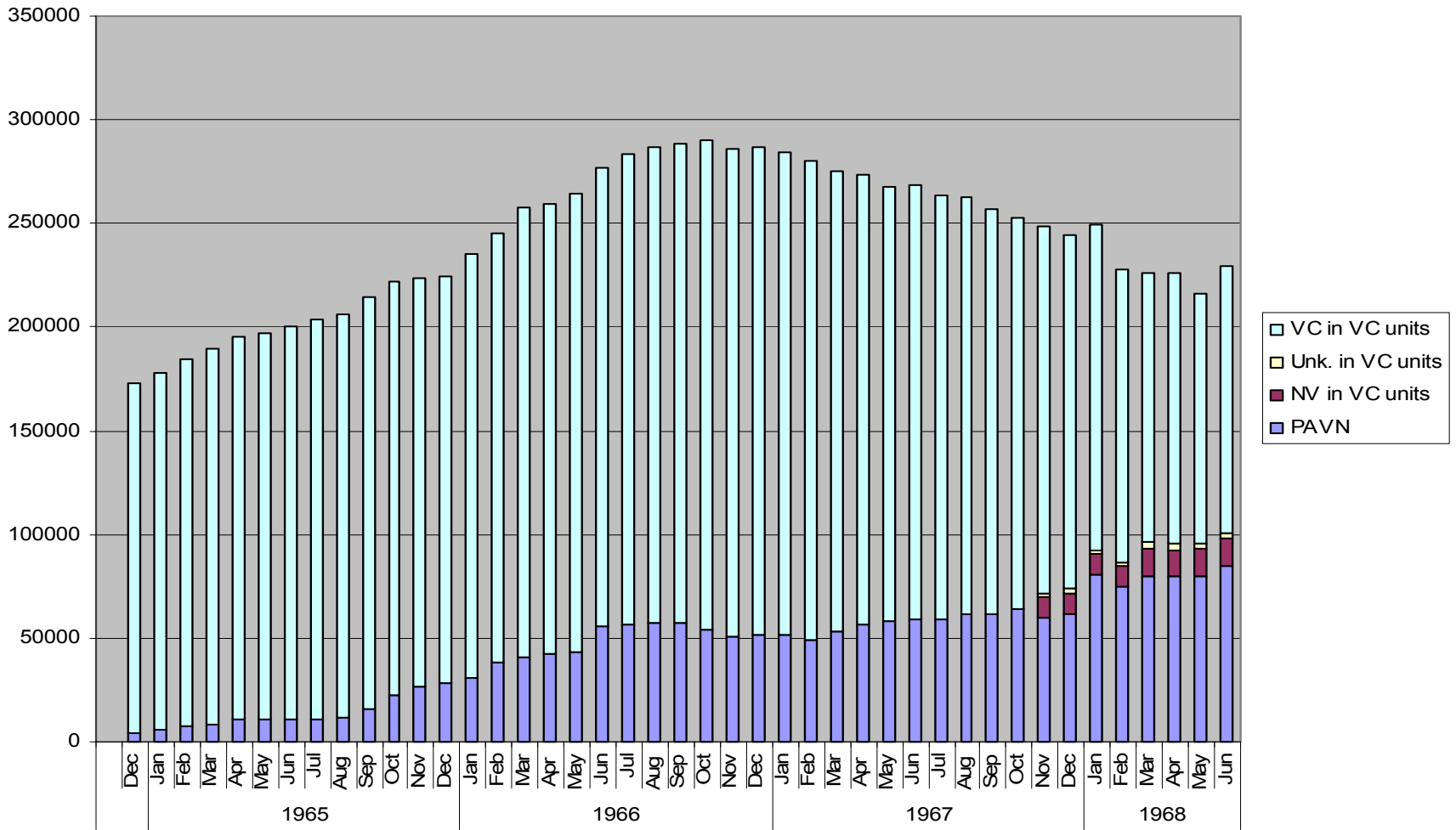
### Americans Killed by Hostile Action - Months



Changes in the Makeup of Communist Forces (MACV contemporary estimates)

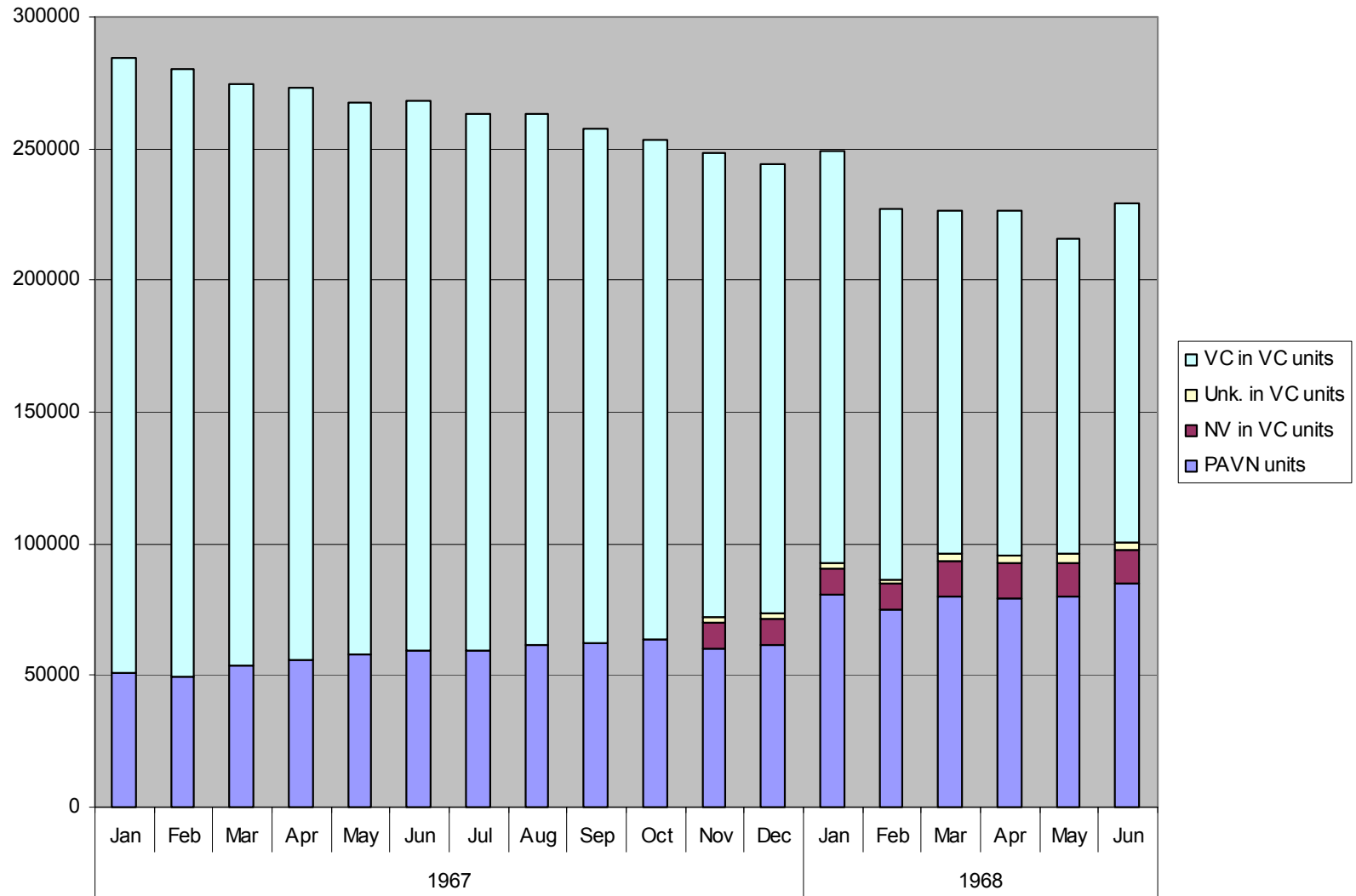


### Makeup of Communist Forces (MACV retrospective estimates)

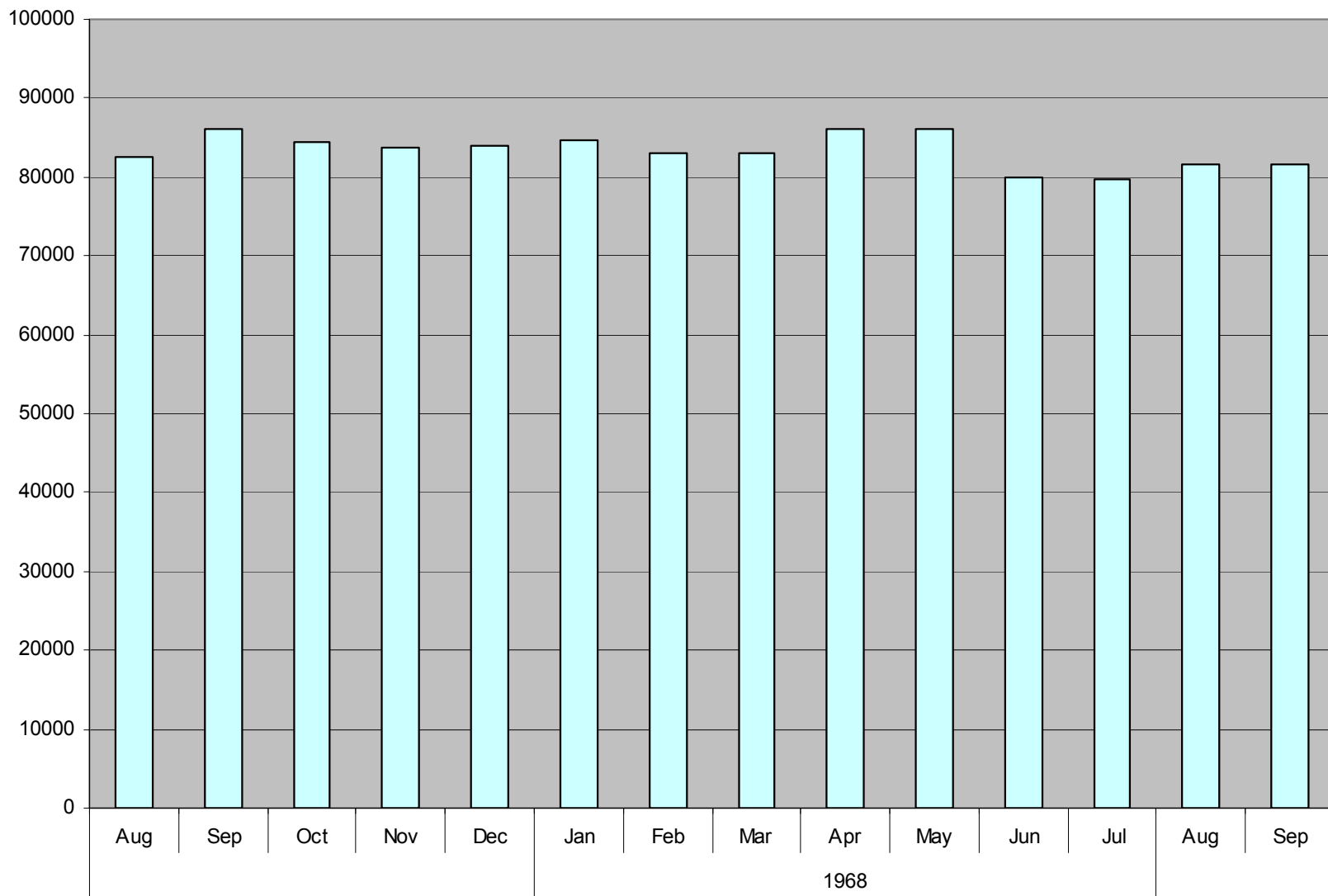




Changes in the Makeup of Communist Forces (MACV retrospective estimates)



### Political Infrastructure (MACV retrospective estimate)



# Westmoreland-Wheeler Messages

- On February 9, General Wheeler (Chairman of the Joint Chiefs of Staff) got a message from General Westmoreland (the US commander in Vietnam), in which Westmoreland said that he was having to thin out his defenses in some areas to strengthen critical points, but Westmoreland said this did not “present an unacceptable risk.” He continued: “Needless to say, I would welcome reinforcements at any time they can be made available.”  
Westmoreland to Wheeler, MAC 1858, 091633Z Feb. 1968.
- On February 12, Wheeler, wanting to be sure he understood correctly, informed Westmoreland that his message was interpreted to mean: “You could use additional U.S. troop units, but you are not expressing a firm demand for them; in sum, you do not fear defeat if you are not reinforced.” (Wheeler to Westmoreland, JCS 01695, 120108Z Feb. 1968.)

- Five hours later, Westmoreland sent a message up his chain of command (it went initially to Admiral Sharp, the commander for the whole Pacific area, who passed it on to Wheeler in Washington): “On the assumption that it is our national policy to prohibit the enemy from seizing and permanently occupying the two northern provinces, I intend to hold them at all cost. However, to do so I must reinforce from other areas and accept a major risk, unless I can get reinforcements, which I desperately need. . . . I need reinforcements in terms of combat elements. I therefore urge that there be deployed immediately a Marine regiment package and a brigade package of the 82nd Abn Div and that the remaining elements of those two divisions be prepared to follow at a later time. Time is of the essence.” (Westmoreland to Sharp, MAC 01975, 120612Z Feb. 1968)

### Americans Killed by Hostile Action - Months

